



## NEPTUNE Heavy lifting jack-up vessel



<b>Owner</b>	GeoSea
<b>Yard number</b>	723
<b>Dimensions</b>	
Length overall	60.25m
Width overall	38m
Distance between legs (longitudinal)	47.2m
Distance between legs (transverse)	31m
Leg length	80m
Hull depth	6m
Draft	3.9m
<b>Speed</b>	
Trial speed	7 knots
<b>Jacking system</b>	
Type	Gusto MSC hydraulic positive engagement
Drive	Electro-hydraulic
Capacity	2,750 tonnes preload per leg
Elevating speed:	
- platform lifting	max 0.45m/min
- platform lowering	max 0.65m/min
- leg lifting	0.65m/min
- leg lowering	0.65m/min
<b>DP system</b>	DP2



## NEPTUNE Heavy lifting jack-up vessel

### Lifting gear

#### Main hoist

Safe working load 600/300/100mt  
Radius 25/42/80m

#### Auxiliary hoist

Safe working load 10mt at 20m  
Radius 25m (max.)

### Work deck

Main deck area 1,600m<sup>2</sup>  
Main deck load capacity 10 tonnes/m<sup>2</sup>

### Helideck

Structure prepared for Super Puma or equivalent

### Thrusters

Azimuth thrusters 4x 1,600kW  
Diameter 2,400mm

### Four main engines

*Diesel engine*  
Maximum output 1,678kW  
Engine speed 1,800rpm

### Alternators

Maximum output 940kW  
Voltage 440 Volt  
Frequency 60Hz

### Two diesel generator sets

*Diesel engine*  
Maximum output 944kW  
Engine speed 1,800rpm

### One emergency generator set

*Diesel engine*  
Maximum output 250kW  
Engine speed 1,800rpm

### Winches

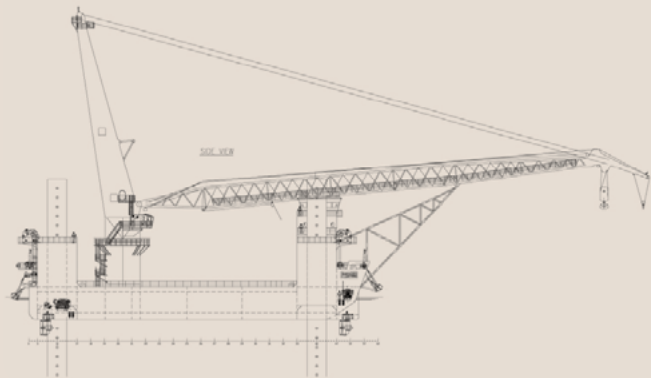
4 x 40 tonnes constant tensioning secondary controlled

### Accommodation

60 people (one and two berth cabins)

### Design

GustoMSC SEA2500



All rights reserved. Reproduction in any form or by any means is not allowed, without prior permission in writing from IHC Merwede Holding BV.

**The technology innovator.**

### Royal IHC

P.O. Box 1, 2960 AA Kinderdijk  
Smitweg 6, 2961 AW Kinderdijk  
The Netherlands

T +31 78 691 09 11

info@ihcmerwede.com  
www.royalihc.com